

# TD-1070

## An Enterprise Level FHD Meeting Room Scheduler

A Meeting Room Scheduler with supreme design and incomparable features. True **aerospace grade metallic unibody** and frame construction, giving the TD-1070 its ultra elegant look-and-feel.



Aerospace-grade alloy metal chassis



Antimicrobial Corning® Gorilla® Glass



Android 11 SE



Energy Saving Function



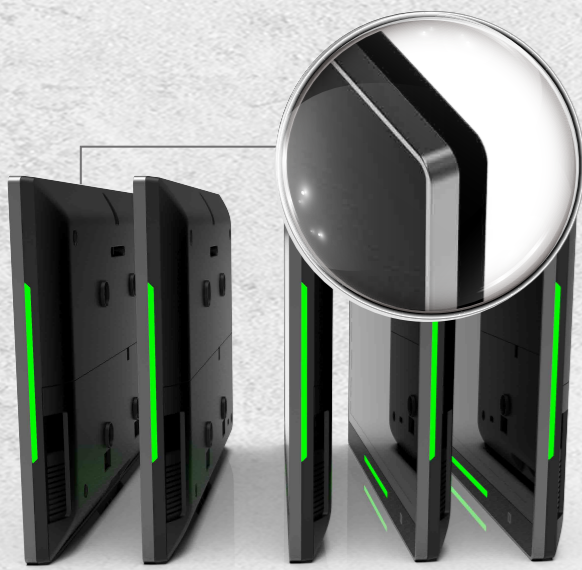
AI Accelerator Embedded



NFC/RFID



Hi-Definition Mic



### Aerospace-Grade Alloy Metal Chassis

A one-piece metal chassis with maximum durability, the aerospace Mg-aluminum alloy design provides a sturdy, durable construction and gives it a superbly thin profile. Quietly and efficiently dissipating heat keeping the entire unit hot spot free at full performance and cool under pressure. Never seen in any other commercial devices built for scheduling.

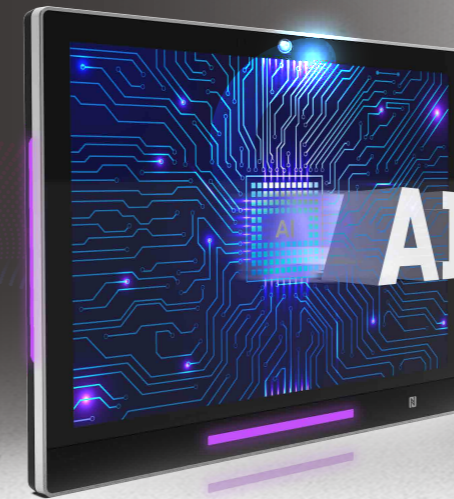
### NFC/RFID Embedded

TD-1070 supports multiple NFC card types to reduce customer matching issues. There are over 30 types of NFC card support.



### Antimicrobial Corning® Gorilla® Glass

TD-1070 uses a Full HD (1920x1200) 10.1 inch IPS panel with high brightness of 430 nits and a high contrast ratio of 1000:1. In addition, the display is built using Antimicrobial Corning® Gorilla® Glass to reduce surface bacteria by as much as 99.9% significantly.

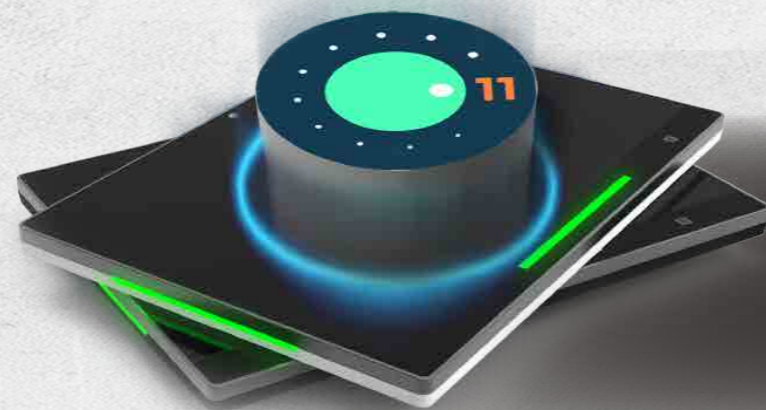


### AI Embedded

The TD-1070's built-in AI enhances customer and employee experiences by incorporating voice and image recognition.

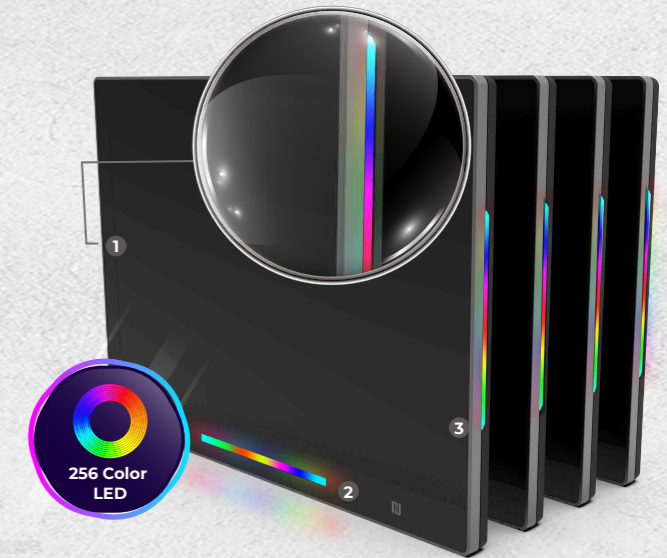
### Android 11 SE

Enhanced safety and security features  
Latest OS in commercial grade PC  
Security test compliance.



### True Color Radiant LED lights

TD-1070 is designed with three-sided true color programmable radiant LED lights that allow visitors to view status from any angle and multicolor match all customer business identities.



### Energy Saving

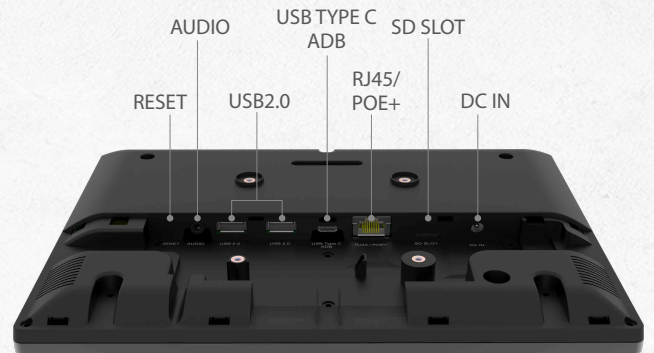
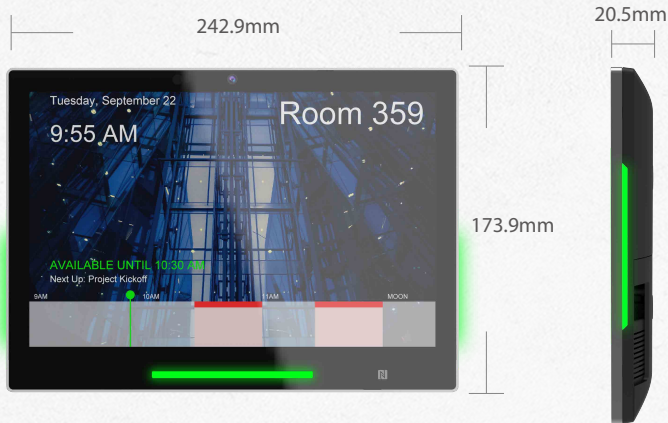
Onboard ALS + Proximity sensors eliminate unnecessary energy expenses by detecting whether or not a user is in the vicinity.

### Hi-Definition Mic

Dual noise-reduction + AEC microphones are located on the top of the TD-1070 for Omni-directional sound detection.



# TD-1070



## Specifications

<b>Features</b>	<b>OS</b>	Android 11
	<b>Touch</b>	Yes, Multi touch
	<b>NFC/RFID(Optional)</b>	Std. Version (13.56MHz) Opt.: H Version, (Embedded Human-Interface-Device) (13.56M&125KHz) Opt: R Version, encrypt content readable (13.56M& 125KHz)
	<b>Memory</b>	2GB LPDDR4
	<b>Storage</b>	32GB eMMC
	<b>Video decoder</b>	H264 / H265,VC-1, MPEG-4, VP9
	<b>Image codecs</b>	JPEG/BMP/GIF/PNG
	<b>Audio codecs</b>	MPEG/OGG/AAC
	<b>CPU</b>	ARM Quad-core Cortex-A55 up to 2.0GHz (64 bit)
	<b>PoE</b>	PoE+ (25W)
	<b>Beacon (BLE)(Optional)</b>	Yes
	<b>Microphone</b>	2 (Noise Reduction & Auto Echo Cancellation)
	<b>ALS + Proximity sensor</b>	Yes
	<b>WatchDog</b>	Yes, Independent watchdog
<b>Display</b>	<b>Size</b>	10.1" (85/85/85/85)
	<b>Resolution</b>	1920 x 1200(FHD)
	<b>Contrast</b>	1000:1
	<b>Brightness</b>	430 nits
<b>I/O Interface</b>	<b>Ethernet</b>	1 x RJ45 (10M/100M/1000M)
	<b>WLAN(Optional)</b>	802.11 b/g/n/ac
	<b>USB</b>	2 x USB2.0 type A/ 1 x USB3.0 type C (w/ ADB)
	<b>Analog Stereo out</b>	1 x 3.5mm stereo (MIC-in & Audio-out)
	<b>Expansion storage</b>	1 x Micro SDHC/SDXC slot
	<b>Speaker</b>	2W x 2
	<b>Camera</b>	1 x 8M with HDR
<b>Mechanical &amp; Environment</b>	<b>Dimension (WxDxH)(Without stand)</b>	242.9 x 173.4 x 20.5 mm
	<b>Mounting</b>	Glass / Surface / Recessed
	<b>Housing</b>	Plastic & Mg-Al Alloy
	<b>Environment</b>	Operating Temp. 0~50°C

※ Specifications may be subject to change.